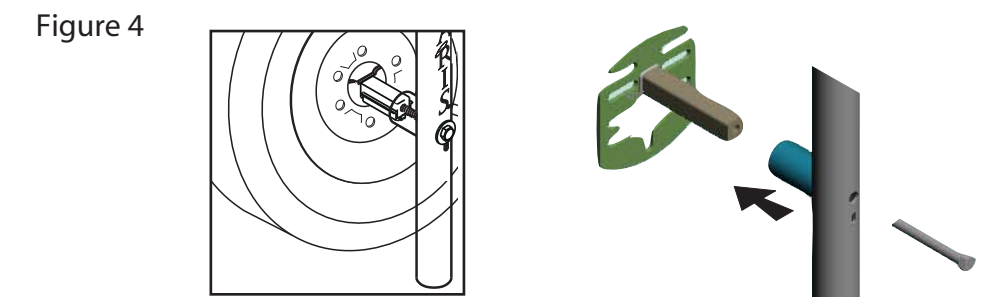
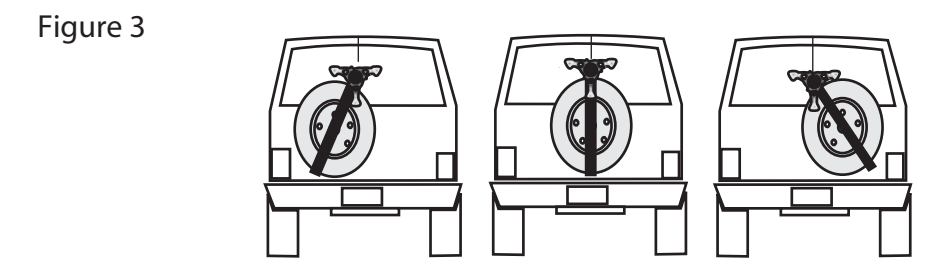
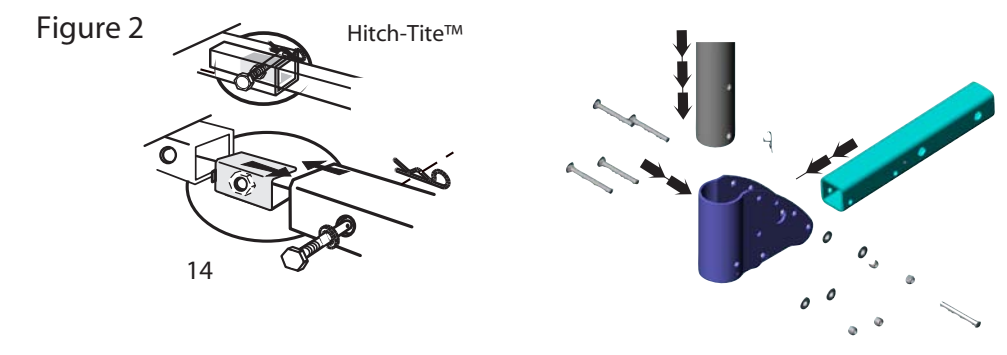
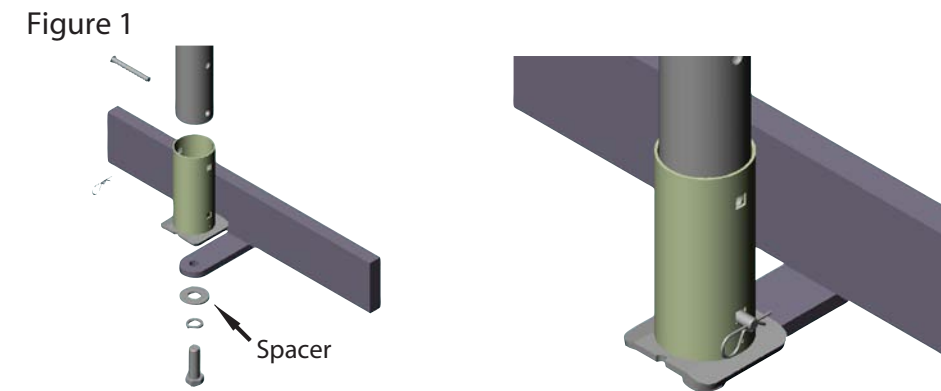


MOUNT CARRIER TO VEHICLE:

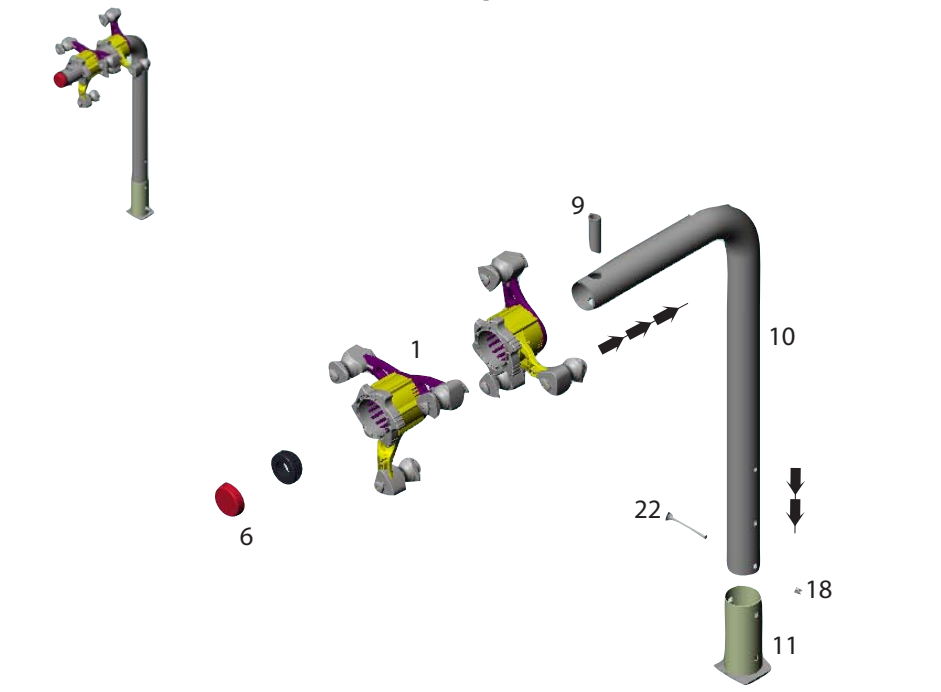
- FOR BALL TYPE HITCH:** Secure ball mount bracket to hitch following Fig. 1.
- Note: Depending on the bumper, it may be necessary to add spacers (sold separately) for nut to be accessible with a wrench.
- FOR RECEIVER TYPE HITCH:** Assemble Hitch-Tite as illustrated in Fig. 2, securing receiver to hitch.
- FOR SPARE TIRE MOUNT:** Before mounting Spare B.A.T., be sure tire is inflated to proper pressure and SparePlate is installed per instructions.
 - Following the illustration that most resembles the rear of your vehicle, rotate Spare B.A.T. tube to one of three available positions (Fig. 3).
 - Line up rib with one of the three positions in the aluminum extrusion, slide Spare B.A.T. onto BasePlate extension (Fig. 4).
 - Tighten bolt until tube touches the tire; then continue to tighten a minimum of six full revolutions of the bolt.
 - Note: Rack should never be mounted to an after market spare tire assembly.



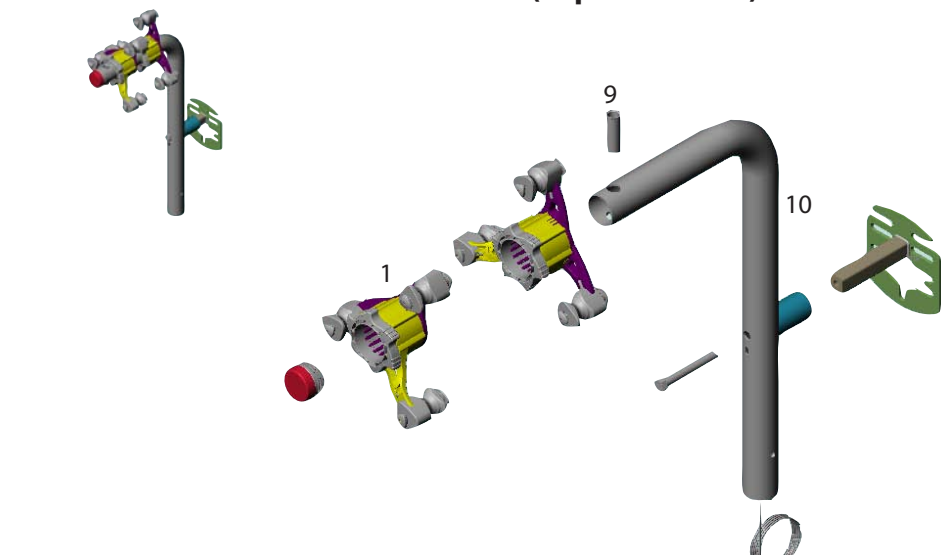
ASSEMBLE CARRIER WINGS:

- Assemble Carrier Wings
 - Remove lock port plug before installing wing(s).
 - Loosen locking ring and slide wing(s) over rib on base tube.
 - All wings must be positioned between caution decal and lock port plug.
 - See Figures 5 and 8 for wing positioning options.
 - Tighten locking ring securely.
 - Replace lock port plug into hole at end of tube.**
- Note:
- Each groove in the wing represents a 15° change in position of wing.
 - To reposition wing(s), slide wing off of rib; rotate wing to desired position.
 - Always make sure wings are positioned between lock port and caution decal.
 - When carrying more than one bike, it is recommended that you adjust wing positions so that bike handles and seats do not touch, and alternate the direction of the bikes.

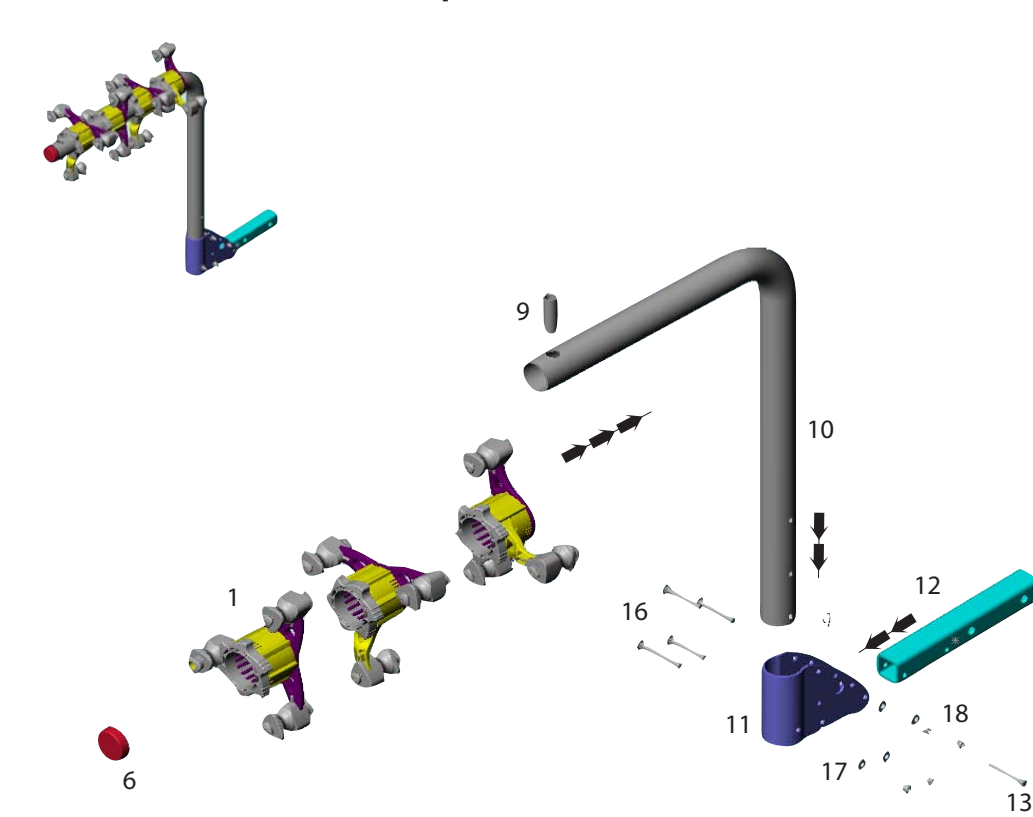
BALL MOUNT ASSEMBLY (exploded view)



SPARE TIRE MOUNT ASSEMBLY (exploded view)



HITCH MOUNT ASSEMBLY (exploded view)



PARTS LIST		
Item #	Description	Part #
1	B.A.T. Wing Assembly	12603
6	Reflector	1079R-30
9	Lock Port Plug	10460
10	Base Tube, Ball Mount	11959
	Base Tube, Model #982, 998D/Q/R	11897
	Base Tube, Model #998F	11898
11	Tilt Bracket, Ball Mount	11858
	Tilt Bracket, 1-1/4"	11872
	Tilt Bracket, 2"	11827
12	1-1/4" Receiver Tube	11875
	2" Receiver Tube	11876
13	Clevis Pin, 3/8x2.25" (1-1/4" Models)	12014
	Clevis Pin, 3/8x3.25" (Ball & 2" Models)	11964
14	Cotter Pin	11965
15	Carriage Bolt, 3/8-16x2.5" (1-1/4" Models)	11216
	Carriage Bolt, 3/8-16x3" (2" Models)	12054
16	Carriage Bolt, 3/8-16x3.5"	12045
17	Washer, Flat 3/8"	8001-82
18	Nut, Nylock, 3/8"	10797
19	Hitch-Tite Bracket (1-1/4" Receiver)	10533
	Hitch-Tite Bracket (2" Receiver)	10534
20	Washer, Split Lock, 1/2"	1071-85
21	Bolt, Hex, 1/2-13x3"	10448
Ball Mount Model #998 ONLY		
22	Bolt, Hex, 3/4-10x2.25", Grade 8	12095
23	Washer, Flat 3/4"	1079-80
24	Washer, Split Lock 3/4"	1079-83

Mounting of Men's and Unique Frames:

Be sure the stabilizer arm's knob is facing inward as shown below. When the wing is assembled, the stabilizer arm should be able to rotate freely.

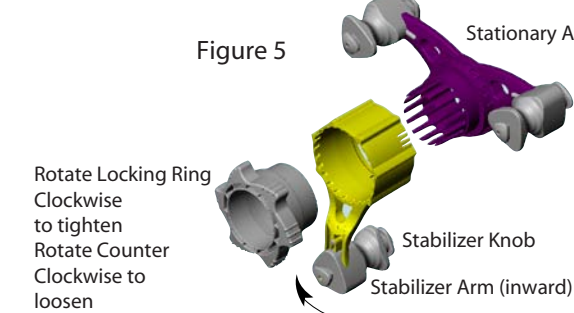


Figure 5 Men's Frame



Figure 7 Unique Frame



Mounting of Women's and Children's Frames:

Be sure the stabilizer arm's knob is facing outward as shown below. When the wing is assembled, the stabilizer arm should NOT be able to rotate freely. The stationary arms should be rotated so they stand on end, and the stabilizer arm should be locked into position to fit onto the crossbar of the bike frame. In some cases, the baby frame mount will have part of the wing standing up holding onto nothing, this is okay. The baby frame then hangs from the two other knobs.

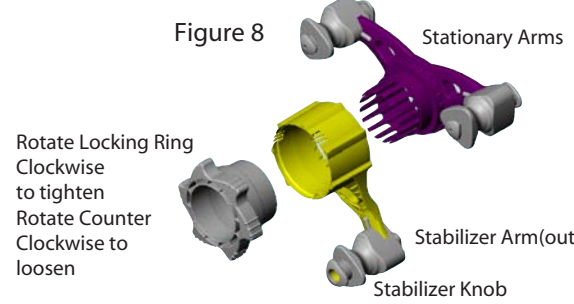


Figure 9 Women's Frame

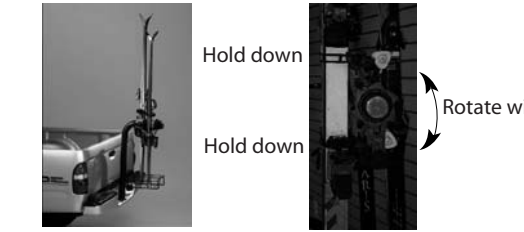


Figure 10 Children's Frame



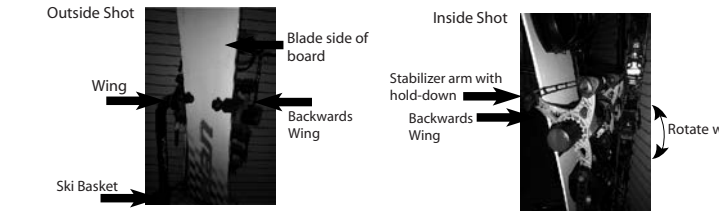
Mounting of Skis:

Rotate wing so the stationary arms are up and down and let the stabilizer arm swing freely. Put skis back to back, place skis into ski basket, and wrap both top and bottom hold-downs around skis.



Mounting of Snowboards:

(Uses two wings) Rotate wing so the stationary arms are up and down and let the stabilizer arm swing freely to grip the board. Take the second wing and put it on the tube opposite the first, so the board is placed in between the two stabilizer arms. Put the snowboard tail in ski basket so the blade side is facing away from the tube. Take off one hold-down strap and stretch it between the two stabilizer arms across the front of the board to secure it to the arms. For two boards, put the blades back to back, and install in the same manner as above.



ACCESSORIES:

- Ski/Snowboard Basket Model # 997A/B is required when carrying skis or snowboards
- Locking Cable Model # 981
- Bike Beam Model # 3037
- B.A.T. Light Model # 985 (included in 999D)

CAUTIONS:

- Read and follow instructions carefully. Save owner's manual for future reference or parts information.
- For safety and security, all rubber straps and U-lock (not included-see figure 7) must be used per instructions.
- Carrier not intended for off-road use or speeds exceeding 65mph.
- Replace any rubber strap at the first sign of wear. Replacement parts are available by contacting Graber: 1-800-783-7257.
- Vehicle should be in good condition in area at which hitch or BasePlate is located. Refer to table on cover page for load capacities and limitations.
- Make sure bike tires are not directly behind exhaust pipe and 12-15" ground clearance is achieved between bottom of tire and ground.
- Do not mount to any type of trailer.
- Ensure knobs have been tightened.
- Make sure wings are positioned between caution decal and lock port.
- Lock port plug or U-Lock must be in place to secure bikes/skis.
- It's the end users responsibility to ensure that use of this product meets all local and state laws.
- To prevent potential damage, secure the front tires of bicycles (part number 3033 recommended).
- It is not recommended to tilt the rack at the tilt bracket while rack is loaded with bikes.

WARNING AND DISCLAIMER

This carrier has been designed to carry bicycles on specific vehicles. Before installation, user must read and follow current Vehicle/Carrier Compatibility Guide recommendations (available through Saris dealer) and enclosed instructions. Fit recommendations are based on vehicle's standard features; optional features may affect the fit recommendations. User must attach carrier correctly to the vehicle, check its attachment before each use, and inspect carrier parts for wear. Carrier's attachment to the vehicle is critical and beyond the control of the manufacturer. Manufacturer and seller expressly disclaim any and all liability for personal injury, property damage or loss, whether direct, indirect, or incidental, resulting from the incorrect attachment, improper use, inadequate maintenance, or neglect of this carrier.

WARRANTY

We warrant this product to the first consumer to be free from defect in material and workmanship for a lifetime. (Please retain your sales slip for your records.) Any product or part thereof found to be defective will be replaced without charge provided that: (1) the product was not misused; (2) no alterations or modifications were made; (3) its failure resulted from a defect in material or workmanship and not from normal wear expected in the use of the product; (4) the product or part is delivered, freight prepaid, to Graber Products. Customer must call Graber prior to return to obtain return authorization number. Manufacturer's only obligation shall be to replace such products or parts proved to be defective.

Made in the U.S.A.
#13716

5253 Verona Road
Madison, WI 53711
(800) 783-7257
www.sarisproducts.com

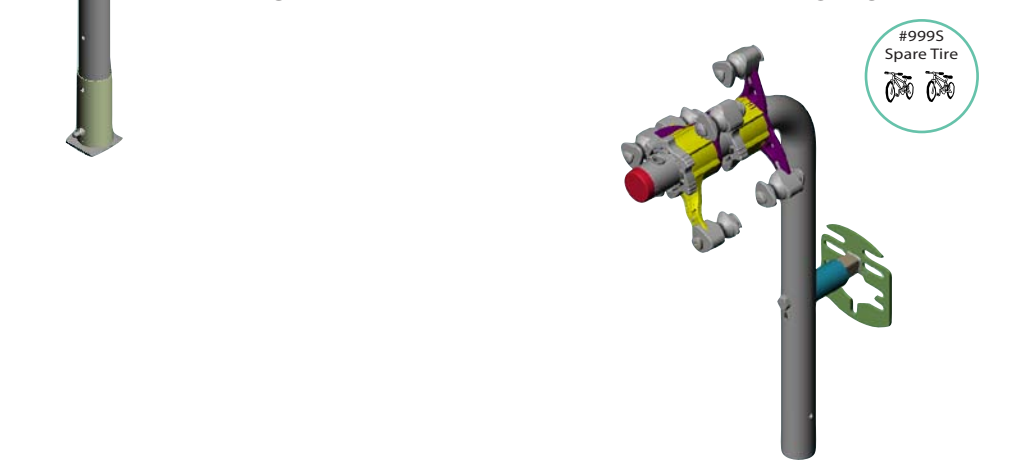
Patent #'s 5,775,555
5,938,093
and others pending

SARIS B.A.T. OWNER'S MANUAL

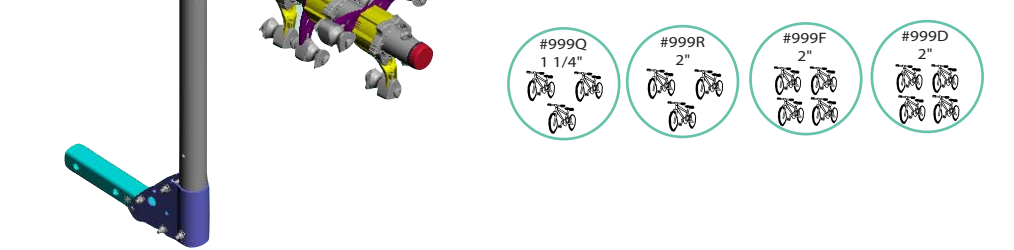
BALL MOUNT



SPARE TIRE MOUNT



HITCH MOUNT



Hitch Size	Tongue Wt.	Maximum # of Bikes	Available Models	Maximum # of Skis	Modes/Accessories Required
Ball/Fixed Tongue	100 lbs.	2 bikes/70 lbs.	#999	2 pairs of skis/70 lbs.	#999 plus one #995A
1-1/4"	200 lbs.	3 bikes/105 lbs.	#999Q	4 pairs of skis/105 lbs.	#999Q plus two #995A
	300 lbs.	4 bikes/140 lbs.	#999Q plus one #995A	4 pairs of skis/140 lbs.	#999Q plus two #995A
2"	300 lbs.	4 bikes/175 lbs.	#999R plus one #995A	4 pairs of skis/175 lbs.	#999R plus two #995A
			#999F or #999D	4 pairs of skis/175 lbs.	#999F or #999D plus one #995A
2"	300 lbs.	5 bikes/175 lbs.	#999F or #999D plus one #995A	5 pairs of skis/175 lbs.	#999F or #999D plus one #995A

Please READ and FOLLOW instructions carefully.